

AD 2 Aerodromes

UGAM

UGAM AD 2.1 Aerodrome location indicator and name

UGAM - AMBROLAURI

UGAM AD 2.2 Aerodrome geographical and administrative data

1	ARP coordinates and site at AD	423137N 0430808E RWY 11/29 centre
2	Direction and distance from (city)	1.6 KM NE from Ambrolauri centre
3	Elevation / Reference temperature	1784 FT / 29°C
4	Geoid undulation at AD ELEV PSN	71 FT
5	MAG VAR / Annual change	7°E (2021) / NIL
6	Aerodrome operator	UNITED AIRPORTS OF GEORGIA LTD
	Address	UNITED AIRPORTS OF GEORGIA 0198 TBILISI GEORGIA
	Telephone	+995322487300
	Telefax	NIL
	AFS	NIL
	E-mail	info@airports.ge, ambrolauri@airports.ge
	Website	NIL
7	Type of traffic permitted (IFR/VFR)	VFR
8	Remarks	NIL

UGAM AD 2.3 Operational hours

1	AD Operator	Daily 0430-1430
2	Customs and immigration	NIL
3	Health and sanitation	NIL
4	AIS Briefing Office	NIL
5	ATS Reporting Office (ARO)	NIL
6	MET Briefing Office	NIL
7	ATS	Daily 0400-1440
8	Fuelling	NIL
9	Handling	Daily 0430-1430
10	Security	H24
11	De-icing	NIL
12	Remarks	NIL

UGAM AD 2.4 Handling services and facilities

1	Cargo-handling facilities	NIL
2	Fuel/oil types	NIL
3	Fuelling facilities / capacity	NIL
4	De-icing facilities	NIL
5	Hangar space for visiting aircraft	NIL
6	Repair facilities for visiting aircraft	NIL
7	Remarks	NIL

UGAM AD 2.5 Passenger facilities

1	Hotels	Available in the city
2	Restaurants	Restaurant in the city, cafe at AD and in the city
3	Transportation	Taxis from AD, car rent at AD
4	Medical Facilities	First medical aid at hospital in the city
5	Bank and Post Office	Bank in the city Post Office: NIL
6	Tourist Office	Available in the city and at AD
7	Remarks	NIL

UGAM AD 2.6 Rescue and fire fighting services

1	AD category for fire fighting	CAT 3
2	Rescue equipment	1 Fire truck
3	Capability for removal of disabled aircraft	Available for L410-UVPE
4	Remarks	Responsible person's details: Mob: +995599263621 E-mail: g.murusidze@airports.ge

UGAM AD 2.7 Seasonal availability - clearing

1	Types of clearing equipment	Snow removal vehicle - Tractor FENDT 820 VARIO
2	Clearance priorities	1. RWY 11/29 and access roads to the Airport Rescue Service 2. TWY and taxiing paths on the apron 3. Aircraft parking stands and the aerodrome vehicles paths
3	Remarks	The snow plan and friction measuring details see in section AD 1.2.2

UGAM AD 2.8 Aprons, taxiways and check locations/positions data

1	Apron designation, surface and strength of aprons	APRON: Concrete and asphalt, PCN 10/F/B/Y/T
2	Taxiway designation, width, surface and strength	TWY A: 18 M, Concrete and asphalt, PCN 10/F/B/Y/T
3	Altimeter checkpoint location and elevation	Apron Elevation 1774 FT
4	VOR checkpoints	NIL
5	INS checkpoints	NIL
6	Remarks	NIL

UGAM AD 2.9 Surface movement guidance and control system and markings

1	Use of aircraft stand ID signs, TWY guide lines and visual docking/parking guidance system of aircraft stands	TWY guide lines
2	RWY and TWY markings and LGT	RWY: Designation, THR, centre line, TDZ, edge line marked TWY: Centre line, edge lines, holding position marked
3	Stop bars and RWY guard lights	NIL
4	Other RWY protection measures	NIL
5	Remarks	NIL

UGAM AD 2.10 Aerodrome obstacles

1 Obstacles in Area 2

Designator	Type	Coordinates	ELEV/HGT	Markings / LGT type, colour	Remarks
1	2	3	4	5	6
UGAM01	Pole	423159.2N 0430716.8E	1915/- FT	NIL	Mast
UGAM02	Pole	423157.5N 0430726.1E	1873/- FT	NIL	Mast
UGAM03	Pole	423154.5N 0430734.8E	1930/- FT	NIL	Mast
UGAM04	Pole	423151.0N 0430746.7E	1885/- FT	NIL	Mast
UGAM05	Pole	423150.2N 0430751.6E	1898/- FT	NIL	Mast
UGAM06	Pole	423123.1N 0430852.7E	1883/- FT	NIL	Mast

UGAM AD 2.11 Meteorological information provided

1	Associated MET Office	Ambrolauri
2	Hours of service	From 05:00 - until 13:00
	MET Office outside hours	-
3	Office responsible for TAF preparation	Kutaisi - UGKO
	Periods of validity	From 05:00 - until 17:00
4	Trend forecast	NIL
	Interval of issuance	NIL
5	Briefing/consultation provided	MET staff consultation at Kutaisi UGKO MET Office and Tbilisi UGTB MET Office
6	Flight documentation	Charts, abbreviated plain language text
	Language(s) used	English
7	Charts and other information available for briefing or consultation	SIGMET, GAMET, AIRMET
8	Supplementary equipment available for providing information	NIL
9	ATS units provided with information	Ambrolauri AFIS
10	Additional information (limitation of service, etc.)	NIL

UGAM AD 2.12 Runway physical characteristics

RWY Designations	TRUE BRG	Dimensions of RWY (M)	Strength (PCR) and surface of RWY and SWY	THR coordinates, RWY end coordinates, THR geoid undulation	THR elevation and highest elevation of TDZ of precision APP RWY
1	2	3	4	5	6
11	115.17°	1100 x 30	10/F/B/Y/T Concrete and asphalt	THR: 423144.35N 0430745.82E END: 423129.23N 0430829.47E GUND: 71 FT	THR: 1769 FT
29	295.17°			THR: 423129.23N 0430829.47E END: 423144.35N 0430745.82E GUND: 71 FT	THR: 1784 FT

RWY Designations	Slope of RWY - SWY	SWY dimensions (M)	CWY dimensions (M)	Strip dimensions (M)	RESA dimensions (M)
1	7	8	9	10	11
11	0.40%	NIL	NIL	1220 x 80	NIL
29	-0.40%	NIL	NIL		NIL

RWY Designations	Location and Description of Arresting System	OFZ	Remarks
1	12	13	14
11	NIL	NIL	NIL
29	NIL	NIL	NIL

UGAM AD 2.13 Declared distances

RWY Designator	TORA (M)	TODA (M)	ASDA (M)	LDA (M)	Remarks
1	2	3	4	5	6
11	1100	1100	1100	1100	NIL
29	1100	1100	1100	1100	NIL

UGAM AD 2.14 Approach and runway lighting

RWY Designator	APCH LGT type, LEN, INTST	THR LGT, colour, WBAR	VASIS (MEHT) PAPI	TDZ LGT LEN	RWY Centre Line LGT Length, spacing, colour, INTST
1	2	3	4	5	6
11	NIL	NIL	NIL	NIL	NIL
29	NIL	NIL	NIL	NIL	NIL

RWY Designator	RWY edge LGT LEN, spacing, colour, INTST	RWY End LGT colour, WBAR	SWY LGT LEN, colour	Remarks
1	7	8	9	10
11	NIL	NIL	NIL	NIL
29	NIL	NIL	NIL	NIL

UGAM AD 2.15 Other lighting and secondary power supply

1	ABN/IBN location, characteristics and hours of operation	ABN: NIL IBN: NIL
2	LDI location and LGT Anemometer location and LGT	NIL NIL
3	TWY edge and centre line lighting	NIL
4	Secondary power supply/switch-over time	NIL
5	Remarks	NIL

UGAM AD 2.16 Helicopter landing area

1	Coordinates TLOF or THR of FATO Geoid undulation	NIL
2	TLOF and/or FATO elevation M/FT	NIL
3	TLOF and FATO area dimensions, surface, strength, marking	NIL
4	True BRG of FATO	NIL
5	Declared distance available	NIL
6	APP and FATO lighting	NIL
7	Remarks	NIL

UGAM AD 2.17 Air traffic services airspace

1	Designation and lateral limits	AMBROLAURI FIZ 423509N 0430321E - 423110N 0431452E - 422805N 0431254E - 423204N 0430124E - 423509N 0430321E
2	Vertical limits	GND to 2000 FT AGL
3	Airspace classification	G
4	ATS unit call sign Language(s)	AMBROLAURI INFORMATION EN
5	Transition altitude	NIL
6	Hours of applicability	NIL
7	Remarks	NIL

UGAM AD 2.18 Air traffic services communication facilities

Service designation	Call sign	Channel(s)	SATVOICE number(s)	Logon address	Hours of operation	Remarks
1	2	3	4	5	6	7
AFIS	AMBROLAURI INFORMATION	119.850 MHz	NIL	NIL	0400-1440	NIL

UGAM AD 2.19 Radio navigation and landing aids

NIL

UGAM AD 2.20 Local aerodrome regulations

Local traffic regulations can be obtained on request via email: info@airports.ge or by phone (+995) 599263624 or (+995) 599263621.

1 Airport regulations

Isolated aircraft stand is located on coordinates: 423130.53N 0430815.95E.

Friction coefficient - Bowmonk AFM2 Airfield Friction Meter.

2 Taxiing to and from stands

Aerodrome taxiways are not equipped with lights. Taxiing to/from parking stands is visual.

3 Apron - taxiing during winter conditions

Aerodrome taxiways are not equipped with lights. Taxiing to/from parking stands is visual.

4 Regulations for helicopters

Take-off and landing on RWY 11/29. Stands 1 and 2 are available for helicopters. Air-taxiing, taxiing to/from stands 1 and 2 by TWY A only.

5 Removal of disabled aircraft from runway

When an aircraft is wrecked on a runway, it is duty of the owner or user of such aircraft to have it removed as soon as possible. If a wrecked aircraft is not removed from the runway as quickly as possible by the owner or user, the aircraft will be removed by the aerodrome authority at the owner's or user's expense.

UGAM AD 2.21 Noise abatement procedures

NIL

UGAM AD 2.22 Flight procedures

1 General

Flights within Ambrolauri FIZ shall be conducted in accordance with the Visual Flight Rules.

AFIS service is only provided within the operational hours of the unit. Outside the AFIS operational hours only FIS service is available.

The AFIS unit provides aircraft with information on known traffic and available information on meteorological and aerodrome conditions.

2 Procedures for IFR flights within Ambrolauri FIZ

Not applicable.

3 Radar procedures within Ambrolauri FIZ

Not applicable.

4 Procedures for VFR flights within Ambrolauri FIZ

- Flight plans (FPLs) are required to be submitted for operations within Ambrolauri FIZ;
- Flights shall be conducted with vertical visual reference to the ground;
- Two-way radio communication shall be maintained with the Ambrolauri AFIS unit on the unit frequency;
- Inbound aircraft shall establish communication with the AFIS unit 5 minutes before crossing the FIZ boundary. However, contact establishing can be delayed until the moment it becomes practically possible.

5 VFR routes within Ambrolauri FIZ

No special arrival and departure routes are established for VFR traffic.

UGAM AD 2.23 Additional information

Intense activity of small size bird flocks takes place daily from 08:00 to 11:00 (local time) (during summer season from June to September) when birds fly from resting area across the approach of RWY 11 to their feeding area, river. Only small size birds are active, which doesn't effect flight safety if strike to aircraft. Their flight height varies from 328 FT (100 M) to 550 FT (170 M) AGL. From 16:00 to 19:00 (local time) the same activity as described above takes place in reverse when the birds return to their resting area.

Dispersal activities include shooting sound produced of liquid gas cannons allocated near the RWY 11/29.

Also modifications of the airport environment are under way to reduce, if not eliminate, the wildlife hazard. No landfills in the vicinity and no open waste-bins on the aerodrome. Ground and grass cover is treated properly.

UGAM AD 2.24 Charts related to an aerodrome

Chart Name	Page
Aerodrome chart - ICAO	AD 2.UGAM-ADC
Visual approach chart - ICAO	AD 2.UGAM-VAC
Bird Concentrations and movement - Index chart	AD 2.UGAM-BIRD
* the chart contains a text page	

UGAM AD 2.25 Visual segment surface (VSS) penetration

To be developed.

AERODROME CHART-ICAO

42°31'37"N
043°08'08"E

ELEV. 1784'

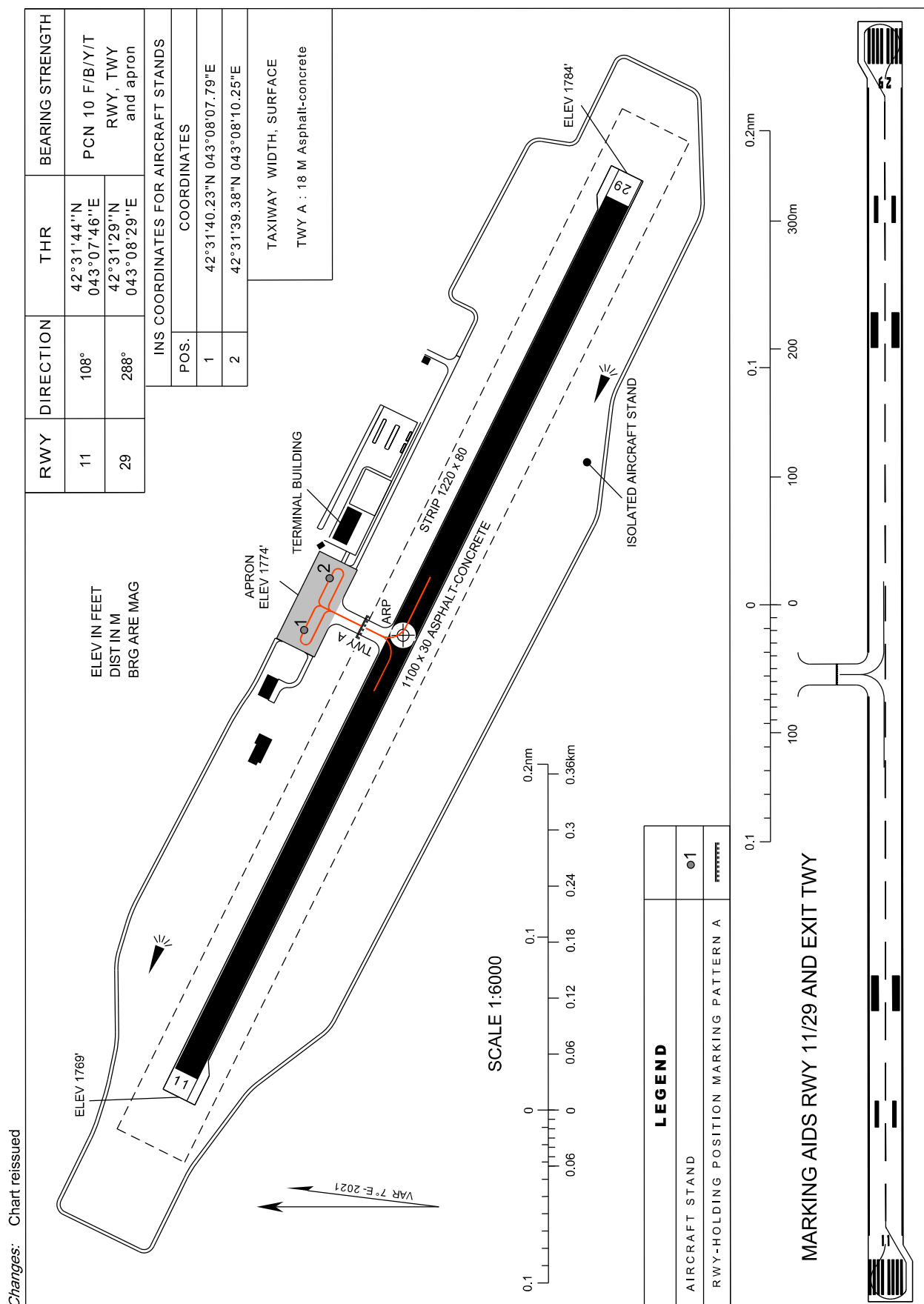
AMBROLAURI INFO 119.850

AMBROLAURI(UGAM)

RWY	DIRECTION	THR	BEARING STRENGTH
11	108°	42°31'44"N 043°07'46"E	PCN 10 F/B/Y/T RWY, TWY and apron
29	288°	42°31'29"N 043°08'29"E	

INS COORDINATES FOR AIRCRAFT STANDS	
POS.	COORDINATES
1	42°31'40.23"N 043°08'07.79"E
2	42°31'39.38"N 043°08'10.25"E

TAXIWAY WIDTH, SURFACE
TWY A : 18 M Asphalt-concrete



Changes: Chart reissued

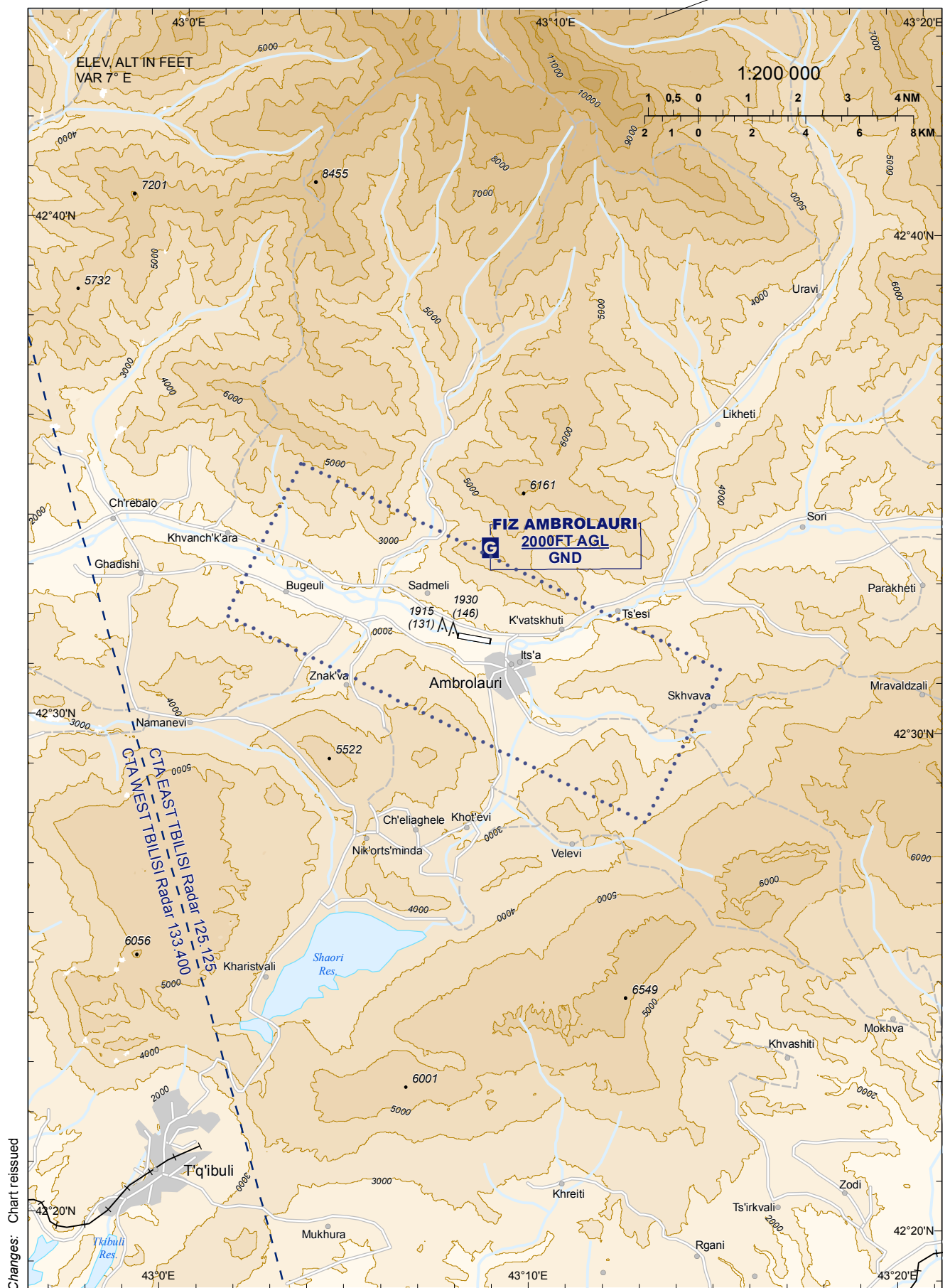
PAGE INTENTIONALLY LEFT BLANK

VISUAL APPROACH CHART - ICAO

AMBROLAURI (UGAM)

AERODROME ELEV. 1784'
HEIGHTS RELATED TO AD ELEV

AMBROLAURI INFO 119.850

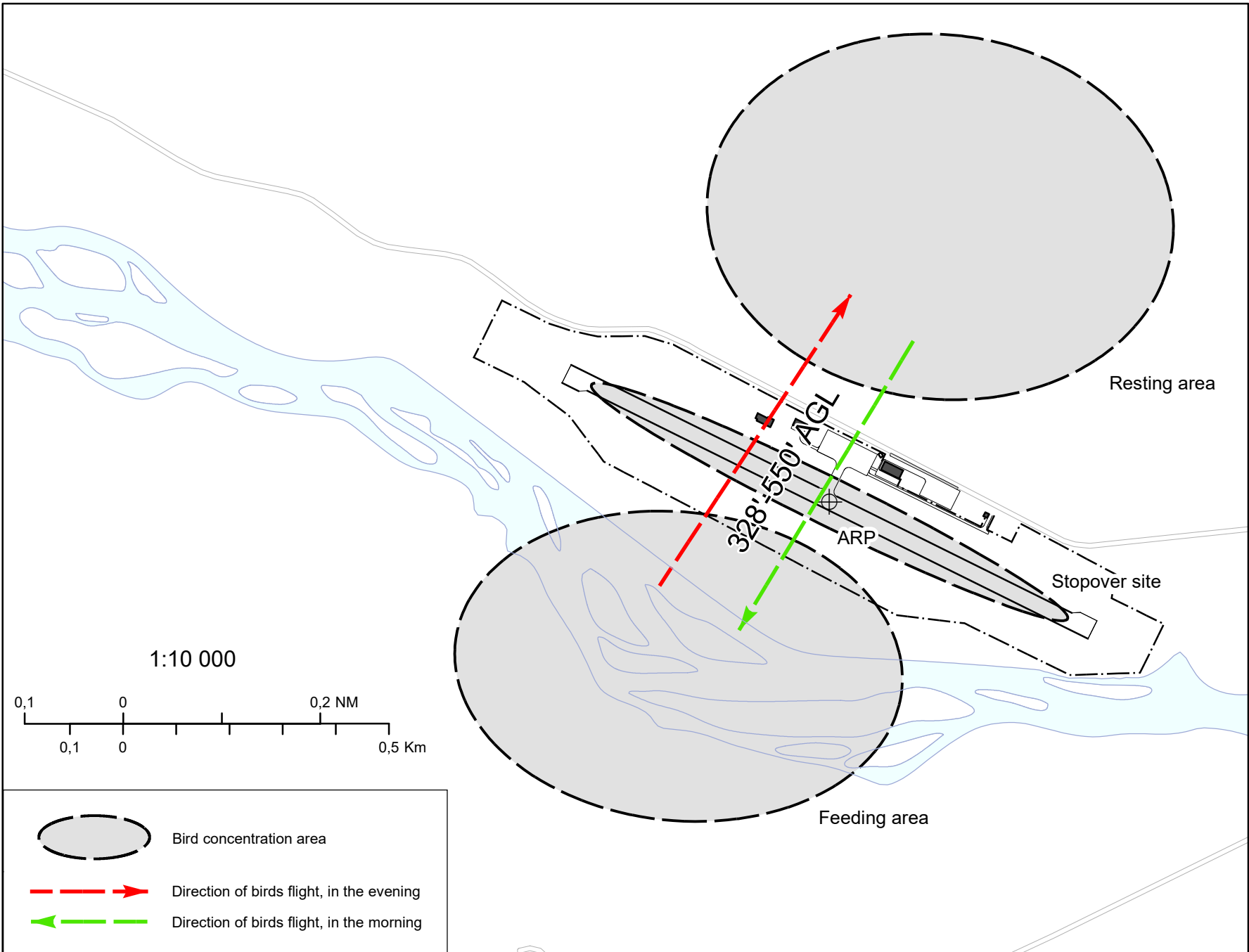


Changes: Chart reissued

PAGE INTENTIONALLY LEFT BLANK

**BIRD CONCENTRATIONS
AND MOVEMENT**

AMBROLAURI (UGAM)



PAGE INTENTIONALLY LEFT BLANK